

TRANSPORT AND STORAGE INSTRUCTIONS

TROUGHED SHEETS AND METAL ROOF TILES

HANBLID

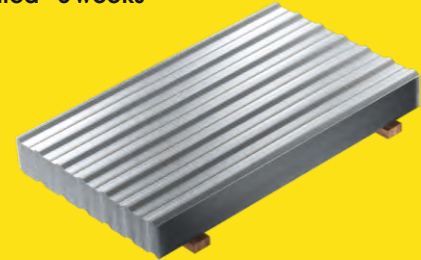
1. It is necessary to check whether the delivery specification corresponds to the materials delivered. If any defects are found, a report should be written or they should be described on the consignment note and confirmed with the carrier's description.
2. Belt slings or forklifts with a minimum fork spacing of 1500 mm are recommended for unloading. During unloading, materials must be protected against scratches and dents. During any potential manual unloading, the sheets must not be slid on each other or on the ground. Sheets should be carried in a vertical position. Remember to provide a sufficient number of people, i.e., a minimum of 1 person per 1 lm of sheet. For example, a 4 lm sheet should be carried by 4 people – 2 per side.
3. Factory packaging provides sheet protection only for transport and short-term storage. Sheets in packages and coils must not be stored outdoors or in rooms exposed to moisture and variable temperatures.
4. Galvanised sheets and aluzinc in factory packaging may be stored for a maximum of 2 days after delivery. However, coated sheets can be stored for a maximum of 3 weeks. Before this time elapses, all sheets must be removed from the packaging and dried. Galvanised sheets and aluzinc must be additionally treated with a layer of maintenance oil. All sheets must be laid at an angle of at least 3 degrees, in a closed room, on dry wooden sleepers, at least 200 mm from the ground. In addition, dry wooden slats must be laid between sheets to ensure free air circulation. Sheets protected in this way may be stored for a maximum of 6 months from the production date.
5. Sheets must not be stored near, e.g., fertilisers, acids, and other aggressive substances.
6. Sheets covered with foil must be protected against moisture. If sheets in foil become damp, the foil must be removed immediately. Sheets in foil may be stored for a maximum of 3 months provided that they are dry and stored in closed rooms that protect them against sunlight. Protective foil must be removed before the sheets are installed.
7. For transport, use a vehicle with a load bed at least as long as the sheets.
8. After assembly it is absolutely necessary to clean the surface of the sheet to remove filings, screws, and other debris.
9. Any complaints regarding defects caused by storage that is not compliant with these instructions will be rejected.
10. The assembly instructions for individual products are provided in separate documents.
11. Regardless of the location of the building, to prevent any risk of premature ageing, its wall and roof cladding must be inspected and maintained regularly, at least once a year.

For smart builders.

It is necessary to check whether the delivery specification corresponds to the materials delivered. If any defects or damage are found, a report should be written or they should be described on the consignment note and confirmed with the carrier's signature.

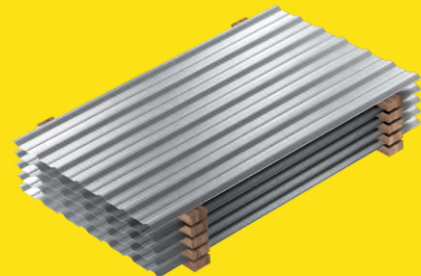
Maximum storage period for storage in factory packaging:

**galvanised and aluzinc – 2 days
coated – 3 weeks**



All sheets must be laid at an angle of at least 3 degrees, in a closed room, on dry wooden sleepers, at least 200 mm from the ground. In addition, dry wooden slats must be laid between sheets to ensure free air circulation.

The maximum storage period for sheets is 6 months.



The sheets should be stored under a roof, away from sources of moisture, and protected from sunlight. Sheets must not be stored near fertilisers, acids, salt, or other corrosive substances.

Recommendation: install the sheets within 4 weeks of delivery.

